

Kansas Barber Practical Examination Procedures – 2 Hours

TAPER MODEL Must be a live model with a **minimum** of ½ inch of hair at the nape and 2+ inches on top **and** at least 1 day of beard growth prior to beginning examination.

1. Shave.
2. Facial Massage - Effleurage (eye orbits), Petrissage (cheeks), Tapotement (chin/jaw area)
3. Tapered Haircut.

CALL CHECK.

4. Scalp Manipulations.
5. Shampoo & Style.

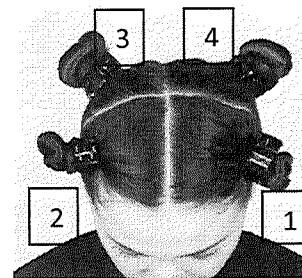
CALL CHECK.

SHEAR CUT MODEL / MANNEQUIN Must have at **minimum** 4" of hair at the nape **AFTER** the haircut is finished. Allow sufficient length to perform remaining services.

1. Shear Cut.

CALL CHECK.

2. Section hair into four (4) subsections - from center front to center of nape and from behind the ears over the apex of the head. See image for example.



Four Sections of The Hair

3. Perform the following procedures in their designated sections. (See diagram)

Section 1 (front left) – Conventional Wrap – Four (4) perm rods.

Section 3 (back right) – Wrap of your choice (spiral, piggyback, **or** bricklay) Four (4) sections.

Chemical mixtures will be simulated using conditioner or similar consistency product as “color” and water as “developer”.

NOTE: BEFORE COMBINING “color” and “developer” mixtures, call for an examiner to check the ratio before you begin application.

4. Perform the following procedures in their designated sections. (See diagram)

Section 2 (front right) – Highlights (1:1 - color: developer) – **CALL CHECK for mixture.**

Four (4) sections with foils. (each must span entire width of the subsection)

Section 4 (back left) – Retouch 2” growth (2:1 - color: developer) **CALL CHECK for mixture.**

Starting at nape– Four (4) sections (each must span entire width of the subsection)

CALL CHECK.

BARBER EXAMINATION KIT LIST

Terry Towels	Perm Rods
Shave Towels	End Papers
Chair Cloths	Combs and Brushes
Shaving Lather or Cream	Color Bowl (or Bottle) and Brush
Straight Edge Razor	Two (2) Measuring Cups (must show ounce markings)
Disposable Blades	Foils
Styptic Powder or Liquid	Hair Clips
Disposable Gloves	Mannequin (minimum of 6" of hair all over and not previously cut)
Massage Cream (facial)	Mannequin Holder (and Stand if desired)
Clipper Spray Disinfectant	
Professional Barber Clippers (with blades)	
Edgers/Outliners	Hair Spray (optional)
Professional Barber Shears	Hair Gel (optional)
Shampoo	Blow Dryer (optional)
Conditioner	After Shave (mild astringent, toner-optional)
Water Spray Bottle	

All tools and supplies MUST be clean, disinfected, and in good repair.

The school will provide the following:

- 1 jar with soap and water
- 1 jar with disinfectant